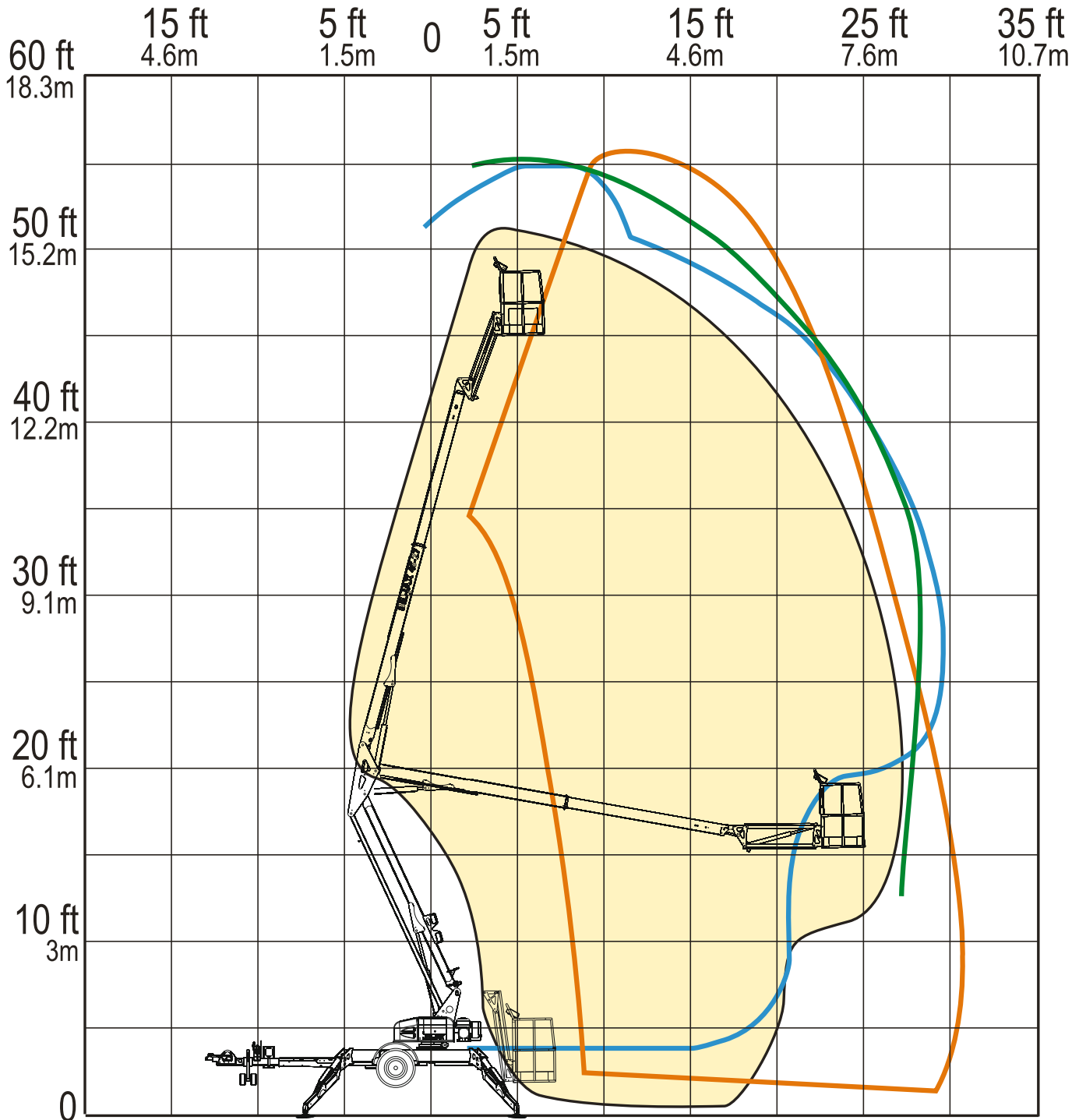


# RANGE OF MOTION - 4527A



# ROM 4527 A



## 50 foot Models from:

4527A vs Competitor G Competitor J Competitor N

**Haulotte**   
GROUP  
More than lifting

[www.haulotte-usa.com](http://www.haulotte-usa.com)



# ROM - 4527 A

## TRAILER-MOUNTED BOOM LIFTS

### Key Advantages vs. Genie TZ50

- Smaller stowed dimensions allow greater maneuverability and access to space restricted areas
- Offers 700° non-continuous turntable rotation (vs. competitor's 359° non-continuous rotation)
- Features longer jib arm with greater range of vertical motion
- Optimized outrigger geometry provides superior 12.5° leveling capability
- Hydraulic ReGEN circuit allows outrigger deployment in less than 30 seconds
- Intuitive, user-friendly controls
- Non-marking footpads are standard
- Air and water lines to the platform are standard
- Material hook option available
- Longer cycle times, larger batteries, and gravity down
- Negative angle boom geometry provides industry leading working envelope

### DC/Gas Hybrid Option - Key advantages vs. Genie Models

- Features larger batteries
- Generator provides 110V power to the platform outlet
- Honda gas engine provides 9 horsepower (vs. competitor's 6.9 HP)
- Competitor's belt drive generator requires belt replacement after every 15 hours of use

### Key Advantages vs. JLG T500J

- Smaller stowed dimensions allow greater maneuverability and access to space-restricted areas
- Offers 700° non-continuous turntable rotation (vs. competitor's 410° non-continuous rotation)
- Features longer jib arm with greater range of vertical motion and optional horizontal rotator
- Optimized outrigger geometry provides superior 12.5° leveling capability
- Hydraulic reGEN circuit allows outrigger deployment in less than 30 seconds
- Intuitive user-friendly controls
- Negative angle boom geometry provides industry leading working envelope

### Key Advantages vs. NiftyLift TM50

- Smaller stowed dimensions allow greater maneuverability and access to space-restricted areas
- Offers 700° non-continuous turntable rotation (vs. competitor's 360° non-continuous rotation)
- Features longer jib arm with greater range of vertical motion and optional horizontal rotator
- Auto-leveling system allows operators to set up and begin using the machine in under 30 seconds
- Optimized outrigger geometry provides superior 12.5° leveling capability
- Hydraulic reGEN circuit allows outrigger deployment in less than 30 seconds
- Intuitive user-friendly controls
- Negative angle boom geometry provides industry leading working envelope
- Non-marking footpads are standard
- Material hook option available
- Larger platform
- Individual outrigger lights
- Nifty uses metric hoses and fittings
- Nifty's tail lights are very easily damaged

Non contractual document - We reserve the right to modify the technical characteristics of this document without notice - 01/2013

