

GLASS CENTERPIECE ITEMS

Equipment, Accessories & Supplies ...



TAYLOR RENTAL CENTER

1560 Hwy. 1 South / MLK Blvd. Greenville, MS. 38701

phone (662) 335-3535, fax; 335-3533

hours; Mon thr Fri; 6:30 am - 5:30 pm, Sat; 7:30 am - 11:00 am

www.taylorrental.com/greenville

BOWLS;

ABBAY;

- a. 5.0" diameter x 9.5" overall height; \$ 6.50
- b. 9.0" diameter x 15.0" overall height; 8.50

Accessory Item;

- c. **FLOATING GLASS DONUT;** \$ 2.50 ea
(3" diameter (1/2" center opening) x 1" oa height.)



BELLINA; (with flat bottom base)

- 9" diameter x 4" width x 7 1/2" height; \$ 6.50

CUBAN; (eco glass - greenish tint) \$ 6.50

- (includes metal stand - can be used with or without stand)
- 11 3/4" (top) oa width, 9 3/4" base x 2 1/8" oa height without stand, 3 1/2" height with stand, 67.6 oz bowl capacity.



CUT GLASS; (all-purpose, decorative, fruit, salad)

- a. 10 1/2" diameter x 8 1/8" oa height; \$ 13.50
(7 5/8" bowl depth)
- b. 12.0" diameter x 10 3/8" oa height; 16.00
(6 1/2" bowl depth)



DAISEY; (eco glass - greenish tint)

- a. 11 3/4" dia. (5 1/2" opening) x 2 1/2" height; .. \$ 6.50
(16.9 oz capacity)
- b. 18 3/8" dia. (9 3/8" opening) x 4 1/2" height; .. 8.50
(67.6 oz capacity)



HARLO; \$ 11.00

- (15" oa width (4.5" base width, 2" neck height) x 5 3/4" oa height.)

Accessory Items;

METAL STANDS;

- a. 8" width x 8" length x 29 1/2" height; \$ 13.50
- b. 8" width x 8" length x 45" height; 15.00



IRIS; \$ 10.00

- (includes metal stand (can be used with or without stand)
- (11 3/4" oa width (11" opening) x 4 1/4" oa height, 181.2 oz capacity.)



MIRA;

- a. 5 1/2" top, 6 3/4" base x 5 5/8" oa height; \$ 10.00
- b. 6 3/4" top & bottom x 6 3/4" oa height; 11.00
- c. 7 3/4" top & bottom x 7 3/4" oa height; 12.00



MODERNO; \$ 10.00

- (10" top & 5 1/4" base widths x 5" oa height, 47.0 oz capacity.)

PUNCH;

- a. **PEDESTAL STAND STYLE;** \$ 13.50

8.0-quart Bowl

- Bowl; 15" top and 5 3/4" base widths x 5 3/4" oa height (5 1/8" inside depth).
- Bowl Stand; 7 1/4" top, 8 3/8" bottom.
- Bowl & Bowl Stand; 10 7/16" oa height.



- b. **SCALLOPED (ANTIQUE) STYLE;** \$ 22.00

2.5-gallon Bowl Includes Glass Tray

- Bowl; 12" top and 4 3/4" base widths x 8" oa height (7 1/8" inside depth).
- Tray; 22 1/8" diameter x 1 5/8" height.



- c. **SCALLOPED STYLE;** \$ 20.00

2.5-Gallon Bowl Includes Glass Tray

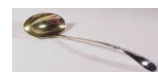
- Bowl; 12" top and 4 3/4" base widths x 8" oa height (7 1/8" inside depth).
- Tray; 22 7/16" diameter x 1 5/8" height.



Accessory Items;

LADLES; (priced separate from Punch Bowls)

- d. Silver; (Grape-Leaf Design) \$ 4.50
- e. Plain; (Revere Style Type) 4.50



BOWLS; continued ...

VIDRIO; (eco glass - greenish tint)

- a. 9" width x 3 1/2" height; \$ 5.00
- b. 12 1/2" width x 4 1/2" height; 6.50



CANDLE HOLDERS, SHADES, STICKS, ETC.;

PILLAR CANDLE TYPE;

AVERY or PEDESTAL STEM HURRICANE;

- a. 5.0" diameter x 10" cylinder height x 19.75" height; \$ 9.50
(4 5/8" inside opening x 6" base diameter)
- b. 5.0" diameter x 10" cylinder height x 23.75" height; 10.50
(4 5/8" inside opening x 6 1/4" base diameter)
- c. 9.0" diameter x 13" cylinder height x 33.5" height; 14.50
(6 5/8" inside opening x 9" base diameter)
- d. 9.0" diameter x 16" cylinder height x 39.5" height; 15.50
(6 5/8" inside opening x " base diameter)



HURRICANE LAMPS; (priced without bases)

- a. 4 3/4" diameter x 11.5" height; \$ 6.50
(openings; 4 3/4" base & top)
- b. 5 1/8" diameter x 13 7/8" height; 8.50
(openings; 5 1/4" base & top)



Accessory Items;

CANDLES & CANDLE BASES; (see further on - top of page 3)

MONET;

- a. 3 1/2" diameter x 15" height; \$ 10.00
(inside glass cylinder section height; 2 5/8")
- b. 4.0" diameter x 17" height; 12.00
(inside glass cylinder section height; 3 5/8")
- c. 5.0" diameter x 19" height; 14.00
(inside glass cylinder section height; 4 5/8")



TAPERED CANDLE TYPE;

ADRIENNE;

- a. 4.0" diameter x 16.0" height; \$ 6.50
- b. 4 1/2" diameter x 20.0" height; 7.50
- c. 5.0" diameter x 23.5" height; 8.50



ASCOT;

- a. 4.0" diameter x 15.0" height; \$ 6.50
- b. 4 1/2" diameter x 19.0" height; 7.50
- c. 5.0" diameter x 24.0" height; 8.50



LAMP CHIMNEY, CYLINDER SHADES; (without bases)

CURVED SHAPE;

CHIMNEY STYLE; \$ 4.00

4.0" diameter (opening; 3" base & 2" top) x 8 1/4" height;

Accessory Item;

HURRICANE (YARD) LAMP; 5.50

(Globe and black iron priced together - " oa height with globe)



STRAIGHT SHAPE;

CUT GLASS; (Lead Crystal) \$ 10.50

Base; 4 5/8" dia x 1 5/16" height, Globe; 4 1/8" dia x 8 1/8" height.

SMOOTH GLASS;

- a. 2 7/8" diameter x 9 7/8" height \$ 2.75
- b. 5" diameter x 10" height 3.75

Accessory Items;

CANDLES & CANDLE BASES; (see further on - top of page 3)



VOTIVE CANDLE TYPE;

BARREL - CYLINDER;

- a. Pebble Bottom Style;
2.0" diameter (top & bottom) x 2 9/16" height.
- b. Smooth Bottom Style;75
2.0" diameter (top & bottom) x 2 9/16" height.



CUBE; (all smooth side & bottom)

- a. 3.0" x 3.0" x 3.0" height; \$ 1.00
- b. 3.0" x 3.0" x 6.0" height; 1.50
- c. 3.0" x 3.0" x 8.0" height; 2.00



OVAL SHAPE; \$.75

Roly Poly, 2.25" top, 2.5" dia. x 2.5" height

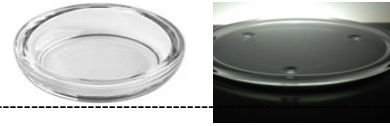


CANDLE HOLDERS, SHADES, STICKS, ETC.;

Accessory Items;

PILLAR GLASS (ROUND) CANDLE HOLDER BASES;

- a. 3 3/4" od (2 1/4" id bottom) x 3/4" height;..... \$ 2.00
- b. 7 3/4" diameter x " height; 2.50



PILLAR (WAX) CANDLES;

ROUND; (TRC stocks black, ivory and white, other colors can be special ordered.)

- a. 1 3/4" diameter x 1" height; POR
- b. 2.0" diameter x 3" height; POR
- c. 3.0" diameter x 6" height; POR
- d. 3.0" diameter x 9" height; POR
- e. 3.0" diameter x 12" height; POR



SQUARE; (TRC stocks black and white, other colors can be special ordered.)

- a. 3.0" x 3.0" x " height; POR
- b. 3.0" x 3.0" x " height; POR



TAPERED CANDLES;

METAL - MECHANICAL; (available in white)

- a. 6" length; \$ 1.00
- b. 15" length; 1.00
- c. 18" length; 1.85
- d. 25" length; 4.50



WAX; (stock; white & ivory, some black, gold, red & silver, other colors may be special ordered.)
8", 12", 15", 18" and 21" heights; POR

MIRRORS;

CIRCULAR;

BEVELED EDGE; 14" diameter; \$ 6.50

SMOOTH EDGE;

- a. 14" diameter; \$ 4.50
- b. 18" diameter; 5.50
- c. 20" diameter; 6.50

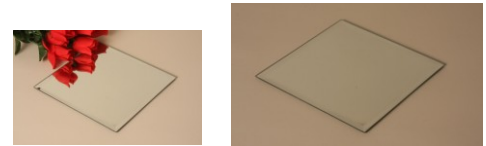


SQUARE;

BEVELED EDGE; 8" x 8"; \$ 6.50

SMOOTH EDGE;

12" x 12"; \$ 4.50



PLATTERS;

BUTTERFLY; (eco glass - greenish tint)

- a. 8" width x 8" length x 2 1/2" height; \$ 5.00
- b. 17" width x 17" length x 3 3/4" height; 6.80



ROUND; (eco glass - greenish tint)

c. 20" dia. (9 1/2" inside dia.) x 1 3/4" height; .. \$ 5.80

TABLE TOP PROTECTORS;

CIRCULAR;

- a. 30" diameter x 1/4" thickness; \$ 6.50
- b. 36" diameter x 3/8" thickness; 7.50
- c. 48" diameter x 3/8" thickness; 8.50

SQUARE; 36" x 36" x 3/8" thickness; \$ 6.50



VASES;

ASPEN;

- a. 7" top & 5 1/8" base widths x 10 3/8" height; \$ 4.00
- b. 10" top & 7" base widths x 13 5/8" height; . 5.50
- c. 11 7/8" top & 7.5" base x 17 5/8" height;... 8.50



BALTIC; (eco glass - greenish tint)

- a. Wide Bottom; \$ 6.00
(4 1/4" base dia. (2 1/8" open) x 10 7/8" height)
- b. Wide Top; 6.00
(3 7/8" oa dia. (2 1/8" open) x 10 3/4" height)



CASPIAN; (ideal for "main" floral centerpiece arrangement)
16 3/8" top dia. x 11 1/4" base x 20 1/2" height; \$ 36.00

VASES; continued ...

CONICAL;

4.0" bottom diameter 7" top diameter x 16" height; \$ 7.50

CUT GLASS;

LAUREL; (11.0" diameter x 18.0" height) \$ 10.50



CYLINDERS;

- a. 5.5" dia. x 16.0" height; \$ 5.50
- b. 6.0" dia. x 6.0" height; 5.50
- c. 6.0" dia. x 14.0" height; 6.50
- d. 7.0" dia. x 8.0" height; 6.50
- e. 8.0" dia. x 8.0" height; 6.50
- f. 8.0" dia. x 12.0" height; 7.50
- g. 8.0" dia. x 16.0" height; 8.50
- h. 8.0" dia. x 20.0" height; ... 9.50
- i. 8.0" dia. x 24.0" height; ... 10.50



Accessory Items;

FLORALITES; (* sales item - includes batteries)

- i. 1 1/4" width x 3/4" height; \$ POR
(submersible, available in blue, green, orange, pink, purple, teal & white)

LED ICE CUBES; (* sales item - includes battery)

- j. 1.5" programmable & submersible) \$ POA
(blue, green, multi-colored, orange, pink, red, white, yellow)

LED LIGHT BASE; (programmable, rental item - includes batteries)

- k. 6.0" diameter x 1" height; (40 LED's, uses 3x - AA) \$ 11.50
- l. 10.0" diameter x 1" height; (80 LED's, uses 8x - AA) 15.50



ELLIPTICAL; \$ 7.50

3.5" base diameter, 3.5" top opening (6.5" max diameter) x 16" height

HURRICANE; (Classic)

- a. 4.5" diameter (" base width) x 6.0" height \$ 3.50
- b. 5.5" diameter (" base width) x 10.0" height 4.50
- c. 7.0" diameter (4.5" base width) x 12.0" height 6.50
- d. 8.5" diameter (5.0" base width) x 15.5" height 8.50



MARTINI / RITZ; (Oversize)

- a. 10.0" diameter x 20.0" height
- b. 12.0" diameter x 12.0" height
- c. 12.0" diameter x 28.0" height
- d. 14.0" diameter x 36.0" height



SKYLINE / EIFFEL TOWER;

GROOVED BODY SURFACE; (Irregular Shaped Base)

- a. 1.75" dia. top x 3 1/4" square base x 16" height;..... \$ 4.50
- b. 2" dia. top x 3 3/4" square base x 24" height; 5.50
- c. 2" dia. top x 4" square base x 32" height; 6.50

SMOOTH BODY SURFACE; (Round Base)

- a. 2" dia. top x 4 1/8" round base x 18" height; \$ 4.50
- b. 2" dia. top x 4 1/2" round base x 24" height; 5.50
- c. 2" dia. top x 4 7/8" round base x 36" height; 6.50



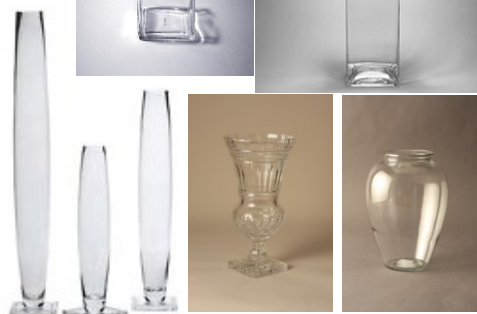
SQUARE;

- a. 6" length x 6" width x 6" height; \$ 4.00
- b. 10" length x 10" width x 10" height; 4.50
- c. 8" length x 8" width x 24" height; 7.00



TOWER / CARNIVAL;

- a. 6" dia. x 24" height (2 3/4" opening), 6"x 6" base \$ 8.50
- b. 6" dia. x 32" height (2 3/4" opening), 6"x 6" base; 10.50
- c. 6" dia. x 43" height (2 3/4" opening), 6"x 6" base 12.50



TROPHY;

7 3/4" top width, 5"x 5" square base x 14 1/4" height; \$ 10.00

URN;

4" base & 4 1/2" top width (3 1/2" open) 7" dia x 10" height; \$ 4.50

NOTE: Many of the items we have listed above and on the back sides of these pages should be considered multi-versatile pieces and may be used as bowls, candleholders and / or vases, etc. Due to the nature of reproducing these images, we ask that you come by "Taylor Rental Center" to inspect any selections prior to your reservation! Thanks ...