

ferti • lome Resource Guide



ferti•lome



Hi-Yield



Natural Guard
GARDENING NATURE'S WAY

Azalea Care made easy ! & other blooming shrubs

Planting

Dig hole twice as large as container the plant is in, plus 1½ times as deep. Mix ½ planting mix plus ½ existing soil. Backfill the hole, keeping the plant at approximately the same level it was in the container. After filling, water the plant with **ferti-lome** Root Stimulator and Plant Starter Solution. For best results, repeat application weekly for three weeks.



Fertilization

Fertilize azaleas with **ferti-lome** Azalea, Camellia Rhododendron Food after they finish blooming each spring. Fertilize each shrub at the drip line to enhance performance. Repeat fertilization monthly through July. (For all other blooming shrubs, fertilize monthly throughout the growing season, March-September).



Bug & Disease Control

Get rid of most common bugs and diseases with **ferti-lome** Triple-Action PLUS when a problem arises. Certain fungus disease problems will require a more target specific product. For these more difficult diseases, use **ferti-lome** Liquid Systemic Fungicide. Should any other problems arise, please give us a call immediately!



Weed Control

Unwanted weeds will sap vital nutrients and moisture from the soil. When preparing a new flower bed, utilize **Hi-Yield** Turf & Ornamental Weed & Grass Stopper Containing Dimension to prevent listed weeds. This will prevent many grassy and broadleaf weeds from germinating. Control many listed grassy-type weeds that are already growing (such as Bermuda grass) with **ferti-lome** Over-the-Top Grass Killer. For all other weeds selectively apply **Hi-Yield** Super Concentrate Killzall as needed. Read label directions before using.



Bedding Plant Care made easy!

Planting

Dig hole twice as large as container the plant is in, plus 1½ times as deep. Mix ½ planting mix plus ½ existing soil. Backfill the hole, keeping the plant at approximately the same level it was in the container. After filling, water the plant with **ferti-lome** Root Stimulator and Plant Starter Solution. For best results, repeat a p - plication weekly for three weeks.



Fertilization

A first application of **ferti-lome** Start-N-Grow containing Dimension combines a fertilizer that meets the nutritional requirements necessary to allow your plants to reach their maximum potential as well as preventing weeds from germinating in the flower bed. Apply "slow release" **ferti-lome** Premium Bedding Plant Food once a month to promote vigorous blooms and deep-green foliage.



Bug & Disease Control

Get rid of most common bugs and diseases with **ferti-lome** Triple-Action PLUS. To specifically control scale, thrips and other soft bodied insects utilize **ferti-lome** Borer Bagworm Tent Caterpillar and Leafminer Spray. Specific types of crawling insects (such as ants, crickets, grasshoppers etc.) may be controlled by monthly applications of **Hi-Yield** Bug Blaster Granules. Certain fungus disease problems will require a more target specific product. For these more difficult diseases, use **ferti-lome** Liquid Systemic Fungicide.



Weed Control

Unwanted weeds will sap vital nutrients and moisture from the soil. When preparing a new flower bed, utilize **Hi-Yield** Turf & Ornamental Weed and Grass Stopper Containing Dimension to prevent listed weeds. This will prevent many grassy and broadleaf weeds from germinating. Control many listed grassy-type weeds that are already growing (such as Bermuda grass) with **ferti-lome** Over-the-Top Grass Killer. For all other weeds selectively apply **Hi-Yield** Super Concentrate Killzall as needed. Read label directions before using.



Tree & Shrub Care made easy!

Planting

Dig hole twice as large as container the plant is in, plus 1½ times as deep. Mix ½ planting mix plus ½ existing soil. Backfill the hole, keeping the plant at approximately the same level it was in the container. After filling, water the plant with **ferti-lome** Root Stimulator and Plant Starter Solution. For best results, repeat application weekly for three weeks.



Fertilization

Apply **ferti-lome** Tree & Shrub Food monthly throughout the growing season. Apply to the drip-line of the shrub or tree & water-in thoroughly after applying. No need to dig holes, contains a special penetrant. Also contains micro-nutrients to meet your plant's special requirements



Bug & Disease Control

Get rid of most common bugs and diseases with **ferti-lome** Triple-Action PLUS. To specifically control scale, thrips and other soft bodied insects utilize **ferti-lome** Borer Bagworm Tent Caterpillar and Leafminer Spray. Specific types of crawling insects (such as ants, crickets, grasshoppers etc.) may be controlled by monthly applications of **Hi-Yield** Bug Blaster Granules. Certain fungus disease problems will require a more target specific product. For these more difficult diseases, use **ferti-lome** Liquid Systemic Fungicide.



Weed Control

Unwanted weeds will sap vital nutrients and moisture from the soil. When preparing a new flower bed, utilize **Hi-Yield** Turf & Ornamental Weed and Grass Stopper Containing Dimension to prevent listed weeds. This will prevent many grassy and broadleaf weeds from germinating. Control many listed grassy-type weeds that are already growing (such as Bermuda grass) with **ferti-lome** Over-the-Top Grass Killer. For all other weeds selectively apply **Hi-Yield** Super Concentrate Killzall as needed. Read label directions before using.



Rose Care made easy!

Planting

Dig hole twice as large as container the plant is in, plus 1½ times as deep. Mix ½ planting mix plus ½ existing soil. Backfill the hole, keeping the plant at approximately the same level it was in the container. After filling, water the plant with **ferti-lome** Root Stimulator and Plant Starter Solution. For best results, repeat application weekly for three weeks.



Fertilization

Use **ferti-lome** Rose Food monthly to increase bloom size and production. This product is specially formulated to promote the right balance between green leafy growth and bloom production. Containing special micro-nutrients allows it to boost plant viability and to sustain heavy bloom demand.



Bug & Disease Control

Spray every 10-14 days with **ferti-lome** Rose, Flower & Vegetable Spray to prevent most insect and disease problems. During certain weather conditions, you may need to spray an additional fungicide. We recommend alternating between **ferti-lome** Systemic Fungicide and **ferti-lome** Liquid Fungicide until the problem is corrected, then continue using the basic program. Should any other problems arise, give us a call immediately



Weed Control

Unwanted weeds will sap vital nutrients and moisture from the soil. When preparing a new flower bed, utilize **Hi-Yield** Turf & Ornamental Weed and Grass Stopper Containing Dimension to prevent listed weeds. This will prevent many grassy and broadleaf weeds from germinating. Control many listed grassy-type weeds that are already growing (such as Bermuda grass) with **ferti-lome** Over-the-Top Grass Killer. For all other weeds selectively apply **Hi-Yield** Super Concentrate Killzall as needed. Read label directions before using.



Fruit Tree Care made easy!

Planting

Dig hole twice as large as container the plant is in, plus 1½ times as deep. Mix ½ planting mix plus ½ existing soil. Backfill the hole, keeping the plant at approximately the same level it was in the container. After filling, water the plant with **ferti-lome** Root Stimulator and Plant Starter Solution. For best results, repeat application weekly for three weeks.



Fertilization

Apply **ferti-lome** Fruit, Citrus & Pecan Food monthly throughout the growing season. Apply to the drip-line of the fruit tree & water-in thoroughly after applying. Also contains micro-nutrients to meet your plant's special requirements. An additional application of **American Brand** Zinc Sulphate may be needed for Pecan Trees.



Bug & Disease Control



Fruit Tree Spray Schedule

1. Pre-Pink Stage (just before bud swells)	ferti-lome Scalecide	Kills over wintering stages of insects and mites.
2. Bloom Stage (for Fire Blight only)	ferti-lome Fire Blight Spray	Do not use insecticides during bloom period.
3. Petal Fall (most petals have fallen)	Natural Guard Neem Py	Spray every week until fruit shows.
4. Cover Sprays (after fruit has set)	Natural Guard Neem Py	Every week for four weeks, then every two weeks until harvest.
5. Dormant Spray (after leaves have fallen)	ferti-lome Scalecide	Kills over wintering stages of insects and mites.



Weed Control

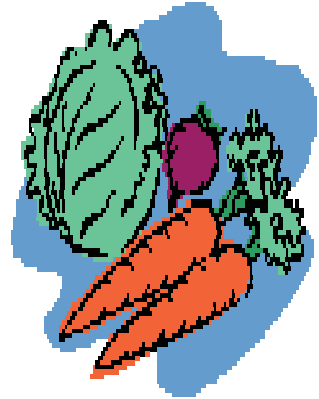
Unwanted weeds will sap vital nutrients and moisture from the soil. When preparing a new flower bed, utilize **Hi-Yield** Turf & Ornamental Weed and Grass Stopper Containing Dimension to prevent listed weeds. This will prevent many grassy and broadleaf weeds from germinating. Control many listed grassy-type weeds that are already growing (such as Bermuda grass) with **ferti-lome** Over-the-Top Grass Killer. For all other weeds selectively apply **Hi-Yield** Super Concentrate Killzall as needed. Read label directions before using.



Vegetable Gardening made easy!

Bed Prep

Growing a productive garden requires a loose and organic soil. Be sure to select seeds and garden plants that are recommended for your growing zone. **Natural Guard** Soil Activator will enhance fertilizer and soil enzyme activity increasing vegetable production and seed development. **AMERICAN BRAND** Weed & Grass Stopper can be used around many vegetable seeds and plants to prevent certain weeds from growing. Incorporate in the soil before planting to prevent weeds from sprouting.



Fertilization

ferti-lome Gardener's Special meets the nutritional requirements of all vegetables, increasing plant vitality and yield production. Apply once a month throughout the growing season. For container grown vegetables use **ferti-lome** Gardener's Special Water Soluble Plant Food Weekly throughout the Growing season.



Bug & Disease Control

To control most common bugs and diseases apply **ferti-lome** Triple-Action PLUS every 10-14 days as directed. Certain disease & insect problems will require a more target specific product. For diseases use **ferti-lome** Landscape & Garden Fungicide or **Hi-Yield** Daconil Fungicide. For Insects use **Hi-Yield** Garden, Pet & Livestock Spray up to 1 day of harvest. **Hi-Yield** Carbaryl Dust is an effective alternative to spraying Read and follow label directions. Spraying tomatoes with **ferti-lome** Yield Booster helps off-set calcium deficiencies which can lead to blossom end rot.

Avoid spraying insecticides and fungicides during hottest part of the day.



Weed Control

Unwanted weeds will sap vital nutrients and moisture from the soil. Prevent many weeds by applying **American Brand** Weed & Grass Stopper before planting or seeding. Kill listed grassy-type growing weeds around selected vegetables with **Hi-Yield** Grass Killer. For all other weeds selectively apply **Hi-Yield** Killzall as needed. Read label directions before using.



...for more information on Vegetable Care see "Disease Control made easy!"

Fire Ant Control Care made easy!

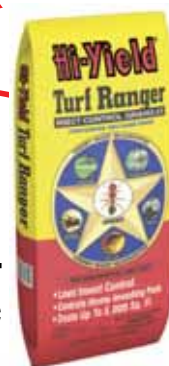
step #1

ferti-lome Come & Get It Fire Ant Killer is a most effective and environmentally friendly ant killer. It covers up to 10,000 square feet reaching all fire ants in that area. Fire ants travel up to 20 feet to feast on the bait. **ferti-lome** Come & Get It Fire Ant Killer stays active on the ground longer and lasts longer than other baits. It is more effective than most traditional insecticides yet costs only \$1.30 per thousand square feet. See visible results in 24 hours.



step #2

Hi-Yield Turf Ranger w/Deltamethrin or **Hi-Yield** Fire Ant Control Granules w/Deltamethrin are effective fire ant, flea, tick and other nuisance insect killers. Use one of these products 2 weeks after applying **ferti-lome** Come & Get It Fire Ant Killer. **Hi-Yield** Turf Ranger w/Deltamethrin or **Hi-Yield** Fire Ant Control Granules w/Deltamethrin will prevent most insects up to 28 days. Effective fire ant control is also obtained by applying **Hi-Yield** Acephate directly to the mound for fast results.



Termite Control made easy!

TERMITES vs. ANTS

SWARMER COMPARISON

STRAIGHT ANTENNAE

BENT ANTENNAE

EQUAL LENGTH WINGS

UNEQUAL LENGTH WINGS

STRAIGHT ABDOMEN

THIN ABDOMEN

TERMITE

ANT



Hi-Yield 38 PLUS is the strongest product available to control subterranean termites. These termites swarm in the spring looking for a suitable wood food source to begin a new colony. This colony will live ordinarily below the soil line where it can find moisture and protection. A mud tunnel is constructed up and into the house or other wood source and the damage is inflicted. 38 PLUS is used to soak the soil in a trench 5 to 7 inches deep around the entire house. This treatment will kill the colony below the soil and those inside the house will soon die. It is most important to read and follow complete label directions on 38 PLUS when treating for termites. Methods to apply 38 PLUS do not involve expensive equipment. A **ferti-lome AIR-O-MATIC** sprayer is a very economical and effective tool.



Trench treatment for foundations. Dig a trench 6 inches wide and 4 inches deep. If footing is more than 12 inches deep create holes in footing every foot with a steel rod. Using a sprinkler can, apply 38 PLUS at a mix rate of .5% (or 3.2 ounces per 2 gallons of water). One quart of 38 PLUS will treat 50 feet of trenches.

Outdoor Insect Control made easy!

LAWNS

• **For most Common Insects:** Apply **Hi-Yield Turf Ranger** or **Hi-Yield Bug Blaster** Granules to control most common insects (fleas, ticks, army-worm, chinch bugs, etc.) We recommend rotating products every other application to prevent any "local" resistances from building. If a spray is preferred (or to use as a follow up 10-14 days later) use either **Hi-Yield Bug Blaster** or **Hi-Yield Indoor/Outdoor Insect Spray**.



• **For harder to control Insects:** (mole crickets, grubs, etc) apply **Hi-Yield Grub Free Zone** as directed.

• For more information on Specific Insect problems...see *Fire Ant Control Made Easy!* Or *Termite Control Made Easy!*



Other Areas

• Treat Dogs and Pet Bedding areas with **Hi-Yield Indoor/Outdoor Insect Spray** as directed.

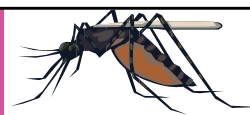
• Treat Vegetable Gardens with **Hi-Yield Garden Pet and Livestock Spray** or **Hi-Yield Carbaryl Dust**. For more information see *Vegetable Gardening Made Easy!*

• Treat most ornamental plants trees & shrubs with **ferti-lome Triple Action PLUS** according to label directions. For more information see *Azalea Care Made Easy* and *Tree & Shrub Care Made Easy*.

• Control Wasp & Hornets with **Hi-Yield Wasp & Hornet Spray**.



Mosquito Control made easy!



• For long-term prevention, Spray **Hi-Yield 38 Plus** in and around most common Mosquito breeding grounds (generally areas where water will stand and stagnate after rainfall) Use as directed.

• To repel Mosquitoes (for up to 8 hours) in and around Indoor or Outdoor living areas, Spray **Natural Guard Insect Lawn, Pet & Insect Spray** in and around areas as needed. Safe for use around children and pets. Use as Directed.



Indoor Insect Control made easy!

Crawling Insects

Most common household insects (such as ants, fleas and roaches) are unique, in that, complete control consists of both killing the adults and preventing the eggs from hatching.



- **Ready-to-Spray: Hi-Yield** Do-It-Yourself Insect Control contains both an insect killer plus a “insect growth regulator” to prevent eggs from hatching.
- **Ready-to-Mix: Hi-Yield** Pest Control concentrate may be used for long term insect elimination. Pour the one oz. bottle into a **ferti-lome** gallon sprayer for quick effective insect elimination. Re-apply monthly.
- **Concentrates:** For a “cost-effective” solution for most common insect problems apply **Hi-Yield** Indoor/Outdoor Insect Spray once a month. For more difficult or heavily infested areas apply **Hi-Yield** Bug Blaster II Insect Spray monthly.



Flying Insects

Mosquitoes and flies may be effectively controlled by utilizing a mixture of **Hi-Yield** Indoor/Outdoor Insect Control and water (follow label directions) in a **ferti-lome** one gallon pump sprayer. Use the sprayer to apply a fine mist to problem areas. This method is very cost effective.



St. Augustine Lawn Care Made Easy!

step #1

St. Augustine Weed and Feed.

Should be applied early in the spring when the grass has greened up and the weeds are actively growing. This product prevents listed weeds from coming up while killing many existing weeds. For more thorough weed control spray with Weed-Free Zone 10-14 days later.



step #2

Weed-Out plus Lawn Food.

Should be applied April-May. Wet the lawn before applying, wait 24 hours then water thoroughly. This product will control most common broadleaf weeds while providing a balanced lawn food. For more thorough weed control spray Liquid Weed-Out 10-14 days later.



step #3

Lawn Food with Iron.

Apply in June This product will noticeably green-up a lawn almost "overnight", and keep it "green" long term. This lawn food contains chelated iron which is rapidly available to the turf. For best results apply monthly in the summer, weather permitting.



step #4

Winterizer

Apply in the fall to both lawns and shrubs. It better enables turf, trees and shrubs to withstand the rigors of winter. It's effects are similar to putting on an overcoat on in the winter. Extra potash enables Warm Season grasses over winter better and be healthier in the spring. *For additional Weed Control apply Winterizer plus Weed Preventer.*



step #5

Hi-Yield Turf and Ornamental Weed and Grass Stopper containing Dimension may be applied in winter and again in spring for the prevention of many common lawn weeds. It will also stop crabgrass from germinating and destroy the weed during the first five weeks of its growth.



...for more information on Lawn Care see "Weed Control Made Easy" & "Disease Control Made Easy"



Centipede Lawn Care Made Easy!

step #1

St. Augustine Weed and Feed.

Should be applied early in the spring when the grass has greened up and the weeds are actively growing. This product prevents listed weeds from coming up while killing many existing weeds. For more thorough weed control spray with Weed-Free Zone 10-14 days later.



step #2

Weed & Feed.

Should be applied April-May. Wet the lawn before applying, wait 24 hours then water thoroughly. This product will control most common broadleaf weeds while providing a balanced lawn food. For more thorough weed control spray Liquid Weed-Out 10-14 days later.



step #3

Lawn Food.

Apply in June This product will noticeably green-up a lawn almost "overnight", and keep it "green" long term. Contains extra iron plus a special slow release form of nitrogen specially formulated for Centipede Lawns. Water thoroughly after applying.



step #4

Winterizer

Apply in the fall to both lawns and shrubs. It better enables turf, trees and shrubs to withstand the rigors of winter. It's effects are similar to putting on an overcoat on in the winter. Extra potash enables Warm Season grasses over winter better and be healthier in the spring.



step #5

Hi-Yield Turf and Ornamental Weed and Grass Stopper containing Dimension may be applied in winter and again in spring for the prevention of many common lawn weeds. It will also stop crabgrass from germinating and destroy the weed during the first five weeks of its growth.



...for more information on Lawn Care see "Weed Control Made Easy" & "Disease Control Made Easy"



Bermuda & Zoysia Lawn Care Made Easy!

step #1

Lawn Food + Crabgrass & Weed Preventer. Should be applied February before the grass has greened up and the weed seeds have begun to germinate. This product prevents listed weeds (both broadleaf and grassy type) from sprouting. It also provides a balanced lawn fertilization. For weed control spray with Weed-Free Zone 10-14 days later.



step #2

W E E D FREE ZONE plus Lawn Food.

Should be applied early spring through May. Wet the lawn before applying, wait 24 hours then water thoroughly. This product will control most common broadleaf weeds while providing a balanced lawn food. For more thorough weed control spray Liquid WEED FREE ZONE 10-14 days later.



step #3

Lawn Food with Iron. Apply in June This product will noticeably green-up a lawn almost "overnight", and keep it "green" long term. This lawn food contains chelated iron which is rapidly available to the turf. For best results apply monthly in the summer, weather permitting.



step #4

Winterizer Apply in the fall to both lawns and shrubs. It better enables turf, trees and shrubs to withstand the rigors of winter. It's effects are similar to putting on an overcoat on in the winter. Extra potash enables Warm Season grasses over winter better and be healthier in the spring. *For additional Weed Control in Bermuda Lawns apply Winterizer plus Weed Preventer.*



step #5

Hi-Yield Turf and Ornamental Weed and Grass Stopper containing Dimension may be applied in winter and again in spring for the prevention of many common lawn weeds. It will also stop crabgrass from germinating and destroy the weed during the first five weeks of its growth.



...for more information on Lawn Care see "Weed Control Made Easy" & "Disease Control Made Easy"



Fescue Lawn Care Made Easy!

step #1

September

Seed or Over-seed with a premium variety of Fescue Seed. Apply **Natural Guard** Soil Activator to enhance the viability of the emerging fescue seed. Soil Activator will promote up to 30% more root development in emerging grasses, while also enhancing later fertilizer applications.



step #2

October

After mowing apply **ferti-lome New Lawn Starter**. New Lawn Starter will stimulate growth in newly established fescue lawns, providing the necessary nutritional requirements, without damaging young, tender new growth. Contains Trace Elements. Water thoroughly after application.



step #3

March

Apply **ferti-lome Weed Out** plus Lawn Food, a premium higher nitrogen lawn food, to control many broadleaf weeds and green-up the lawn. For more thorough weed control follow up with **ferti-lome Weed Free Zone** in 10-14 days. *If weeds are not a problem use **ferti-lome Slow-Release Classic Lawn Food**.*



step #4

May

Apply **ferti-lome Lawn Food** with Crabgrass & Weed Preventer containing Barricade to keep your lawn looking its best while preventing crabgrass along with many other pesky weeds throughout the summer. *If you are planning to over-seed in August, apply **ferti-lome Crabgrass Preventer plus Lawn Food w/Team** instead.*



step #5

June

Applying **Natural Guard** Soil Activator will help to increase microbial soil activity resulting in better efficacy of fertilizers and herbicides. Apply **ferti-lome Lawn Food plus Iron**. Its special chelated formulation will help to promote deep greening for the Summer. Be Sure to water thoroughly after applying.



step #6

August

Seed or over-seed with a premium Fescue Seed if needed. Apply **ferti-lome New Lawn Starter** with its special formulation to ensure your grass seed has the essential nutrients for developmental growth in these early stages. Be sure to water thoroughly after applying.



...for more information on Lawn Care see "Weed Control Made Easy" & "Disease Control Made Easy"!



for all Grasses!!

A safe natural way to help your lawn clippings “compost” and return to the soil valuable nutrients found in grass clippings and thatch. Promotes the chelation* of available nutrients, assists in nutrient uptake and improves the growth of beneficial micro-organisms. Contains humates* and 17 other Trace Elements. Use as part of a multi-step fertilizer Program. Apply in Spring (April) And Fall (October) for best results.

*Most nutrients are much more available and therefore more effective when provided to the plant in a “chelated” form

**Each use of Soil activator will progressively build up humus content in soil. A higher level of humus content will make fertilizers more efficient, producing greener, healthier lawns.

